

PARK PLACE OUTREACH, INC. *Youth Emergency Shelter Savannah, GA*

Our landscape architecture team takes an active role in the community. Several of the firm's employees live in Savannah, so when the firm was asked to lend a hand with the landscape design for Park Place Outreach's new home, they were pleased to do so.

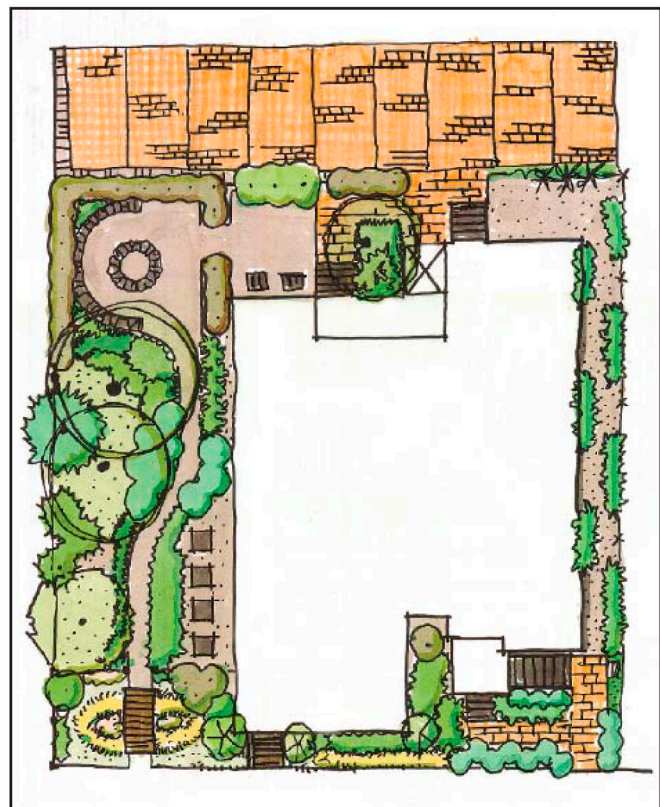
Park Place Outreach, Inc. provides a temporary home for runaway and at-risk youth. It outgrew its original location and moved to a new and larger facility on East Henry St. The new shelter is an ambitious work which bridges old and new. The original wing of the shelter, a former single family home, was built in the early 20th century. A new, complementary wing more than doubles the space of the old home.

The architects for the new Youth Emergency Shelter discovered the project was also an excellent opportunity to place a LEED certified residence within a rapidly evolving inner city neighborhood which could serve as a model for future redevelopment.

The landscape includes a outdoor classroom, native and drought tolerant plantings, permeable paving, a high percentage of greenspace, bike racks, and a rain garden bridged by a small boardwalk illustrating the way that a simple landscape feature can capture rainwater, enhance the natural environment, and beautify a residential landscape.

The landscape architecture team contributed the following LEED - NC points to the overall project in cooperation with the project's architect and engineers:

- Alternative Transportation - Bicycle Storage
- Maximize Open Space
- Stormwater Design - Quality Control
- Reduce Heat Island Effect, Non-Roof
- Water Efficient Landscaping
- Regional Materials
- Use of Recycled Content



Conceptual Site Plan

Disclaimer: All work on this project was performed by senior SDCI staff while working for previous employer

Sustainable Design Consultants, Inc.

